



ARNOLD LODGE

4 - 18 yrs Co-educational Independent Day School

SIXTH FORM

INFORMATION

BOOKLET

For Entry September 2021

ESPICE

est. 1894

FINNEY



ARNOLD LODGE

4 - 18 yrs Co-educational Independent Day School

CONTENTS

Page	Contents
4	The Sixth Form at Arnold Lodge
5	Sixth Form and Subject Options
6	Dress and Expectations
7	Curriculum and Entry Requirements
8	Choosing Subjects
9	The Douglas Hall Sixth Form Scholarship
10	Recent Leavers' Destinations
11	A Level Art & Design
12	A Level Biology
13	A Level Business (BTEC available)
14	A Level Chemistry
15	BTEC Creative Media Digital Games Production
16	A Level Computer Science
17	A Level English Literature
18	Diploma Food Technology
19	A Level French
20	A Level Geography
21	A Level History
22	A Level Mathematics
23	BTEC Media (Creative Digital Media Production)
24	BTEC Music Technology
25	BTEC Performing Arts
26	BTEC Physical Education
27	A Level Physics
28	A Level Politics
29	A Level Sociology
30	A Level Spanish



ARNOLD LODGE

4 - 18 yrs Co-educational Independent Day School

The Sixth Form at Arnold Lodge School

Our academic results—particularly the progress pupils make—are exceptional. The A Level results from our 2017 cohort at Arnold Lodge Sixth Form were outstanding. With **27% of all grades at A*-A, 96% at A*-C** and a **100% pass rate**, we are very proud of the achievement of our pupils. While the headline figures are excellent, it is our value added (the number of grades scored above targets taken from external benchmarking) that truly reflect the quality of our provision. For every examination taken, Arnold Lodge pupils scored **0.5 of a grade higher than targeted**. Similarly, in 2018, our BTEC and A Level results were excellent with a **95% pass rate** and **12% more A*/A** grades than targeted. In 2019, our BTEC and A Level results continued the trend with **1.4 of a grade higher than targeted per pupil**, a **100% pass rate** and **18% more A*/A** grades than targeted. Whatever your ambitions, Arnold Lodge Sixth Form will be able to support you to achieve your very best academically. For 2020, our results at BTEC and A Level were, once again, first rate; **10% at A*, 32% A*-A, 55% A*-B** and a **100% pass rate**. The key thing is that, each year, our pupils attain more than their target grades showing that we are able to drive pupils to their very best marks at A Level and BTEC.

What is unique about Arnold Lodge Sixth Form?

ALS Sixth Form offers a range of A Level and BTEC subjects to provide a **truly bespoke Sixth Form curriculum**. Whether pupils are looking to apply to Oxbridge with a full set of A grades or if they need to re-sit English & Mathematics GCSEs as part of a BTEC and A Level combined course, our curriculum and approach to education provides the opportunity and support for each pupil to fulfill their aspirations. This flexibility, coupled with a **maximum Sixth Form class size of 10**, allows us to give significant teaching time, academic challenge and personal support to ensure our pupils achieve their very best academically.

How are students stretched beyond the formal curriculum?

It's not just the examination performance that makes ALS Sixth Form outstanding; the confidence and wider skills that our pupils develop over their two years of study – skills such as **communication, creativity, critical thinking and collaboration** – provide a wonderful foundation for study at university and the world of work. Our enrichment programme provides a breadth of opportunity and experience for our Sixth Form pupils. As part of enrichment, pupils will learn to cook, to budget, tackle their EPQ, given opportunities to visit universities and prepare themselves for their futures.

Arnold Lodge aims to support pupils to be happy and confident whilst developing their skills and knowledge so they can be successful in their aspirations. Our core values – **honesty, hard work and kindness** – are central to the success of our school and these are given as much importance in our Sixth Form as they are throughout the rest of the school.

How will an education at Arnold Lodge's Sixth Form benefit my child in subsequent years?

Our former pupils have been very successful in receiving their first choice university and, for quite a number, unconditional offers. Much as this is a reflection of high quality academic outcomes, it also demonstrates the advice and guidance that pupils receive throughout the UCAS process.

Is financial support available?

The Douglas Hall Sixth Form Academic Scholarship carries a significant reduction in fees. It is typically awarded to pupils who are set to achieve all grades 8 or 9 in their GCSEs. Selection involves interviews in the subjects that candidates wish to take at A Level, a general interview, references and an academic assessment.

This booklet contains information which I hope you will find useful. Should you have any further questions about Arnold Lodge Sixth Form, please do not hesitate to get in touch.

Best wishes,

David Preston
Headteacher





ARNOLD LODGE

4 - 18 yrs Co-educational Independent Day School

ALS SIXTH FORM

Sixth Form - September 2021

Every child deserves the opportunity to fulfill their own potential in an environment where they feel safe, supported and encouraged to improve, progress and grow. This central ethos of Arnold Lodge continues through into our Sixth Form.

To ensure that we provide the **flexible** and **bespoke** education we pride ourselves on, we also offer BTEC subjects alongside a range of A Level options for pupils. Few independent schools in the country offer this sort of flexibility and the opportunity to take both A Level subjects and BTEC combined provides pupils with a wonderful opportunity to build a programme of study at Sixth Form that is exactly right for them.

While this prospectus is designed to give you more information on the topics studied and what pupils can expect from those subjects, this is not definitive. If you would like more information on a particular subject, please contact the named teacher on the subject page. Similarly, if there is a subject you're interested in which is not listed, please let us know.

Subject Options

- . Art & Design
- . Biology
- . Business (A Level & BTEC)
- . Chemistry
- . Creative Media Digital Games Production (BTEC)
- . Computer Science (A Level)
- . English literature
- . Food & Nutrition
- . French
- . Geography
- . History
- . Mathematics
- . Media Studies
- . Music Technology (BTEC)
- . Performing Arts (BTEC)
- . Physical Education (BTEC)
- . Physics
- . Politics
- . Sociology
- . Spanish





ARNOLD LODGE

4 - 18 yrs Co-educational Independent Day School

ALS SIXTH FORM

Dress and expectations

As a Sixth Form student you will be relied upon to dress appropriately. This means dress of a business standard, suitable for life in a busy but relatively informal office. More specifically the following guidelines may help:

Girls	Boys
<ul style="list-style-type: none"> • Suit (or trousers/skirt and tailored jacket) with a blouse • No jeans/denim • Business standard shoes/boots – suede or leather 	<ul style="list-style-type: none"> • Suit (or tailored trousers and jacket) and tie • Plain jumper (no cardigans) • No jeans/denim • Business standard shoes black or brown.

A suit (if not worn every day) is essential for all formal school events. Pupils should not need to be reminded of the school dress code. Within these limits pupils are expected to use their own judgement and common sense.

Your expectations of us	Our expectations of you
<ul style="list-style-type: none"> • A programme that is matched to your interests and aspirations • A tutor who monitors your progress, provides guidance and assistance in setting targets for improvement, and supports you in other aspects of life • Structured private study time with regularly set and marked work to be completed during private study • Support in developing good study skills and dealing with stress • A higher education and careers guidance programme suited to your needs, with expert advice • The opportunity to take part in the wider school, including inter-House and extra-curricular activities and involvement in the education of younger children • Opportunities for your parents to come into school to discuss your progress • Regular reports on your progress 	<ul style="list-style-type: none"> • Be determined to make the most of your time in the Sixth Form • Accept responsibility for your own learning with support from your tutor and subject teachers • Complete all your work to the best of your ability and by the deadline set • Effectively use your private study time in school • Act as a positive role model for the younger students in both the school and the community • Adhere to the Sixth Form dress code • Maintain an excellent record of attendance and excellent punctuality • Discuss with your tutor in advance if you need to be absent • Use the signing in/out system correctly • Contribute to the life of the school and of the Sixth Form in as many ways as possible



ARNOLD LODGE

4 - 18 yrs Co-educational Independent Day School

ALS SIXTH FORM

What can I expect from ALS Sixth Form?

Sixth formers at Arnold Lodge School can expect:

- **Seminar style classes**, which ensures that the teaching is cooperative and that learning is paced to suit the individual.
- **Regular, accurate and personal feedback about work, progress, targets and expected grades** means that students and parents are fully able to take part in and guide the Sixth Form experience. A policy of 'no surprises' avoids problems late in the course and enables all to get the best from their studies.
- **Support for self-study.** Using the common room as a base, Sixth Formers can expect a comfortable room for self study and the opportunity to develop self-study skills. With an additional study area due to be created for September 2021, Sixth Formers can expect plenty of space to study and revise as well as the support to manage their time to achieve their very best.
- **Periods of non-contact with teachers.** Alongside normal periods of non-contact used for self-study, Sixth Form students can expect one Games session per week along with one session of Enrichment. Enrichment will focus on life skills to make sure that, when completing their courses at ALS, Sixth Formers have the right skills and knowledge for their next steps be that work, apprenticeship or university.
- **An Enriching Experience:** Enrichment afternoons are used to build life experiences and transferable skills for our Sixth Form pupils. This covers team building activities, financial skills, enterprise, cooking, careers, guest speakers covering a whole range of topics, UCAS to prepare applications and even then this is just a snippet of the programme. The time is used to ensure that, when our pupils complete their courses, they are equipped for their next adventure be that a gap year, a career, an apprenticeship or their first choice university.

Entry Recommendations and Academic Standards for A Level

The following information provides an idea of the sort of standard pupils can expect to work at A Level based on their GCSE grades. This is useful information but is not definitive. Arnold Lodge will *never* accept that a pupil is a pre-determined set of data. Some pupils flourish when studying A Levels and others find it a real step up to maintain their GCSE pace. Either way, our highly experienced staff will be there to provide the support, guidance and advice necessary to help all pupils to progress and attain the very best that they can.

- The recommended minimum for progression onto A Level courses is **five GCSEs at grade 5 and above.**
- In most subjects, a **grade 6 in that subject** or a closely related one is preferred, but in **languages, mathematics and the sciences a grade 7** is the advised starting point.

However, these are *recommendations* rather than rigid requirements. Discussions can be held with students and those not meeting this standard or not expecting to do so may be accepted after further discussion. Progression from the Lower Sixth to the Upper Sixth is conditional on achieving pass grades (A to E) in the subjects to be taken at A2 level.



ARNOLD LODGE

4 - 18 yrs Co-educational Independent Day School

A LEVEL INFORMATION

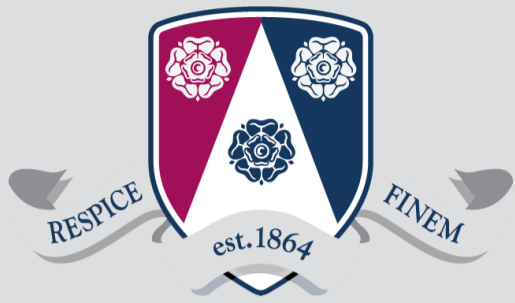
Choosing Subjects

While picking subjects to study in Sixth Form can be a very difficult decision, the flexible nature of our curriculum means that pupils are given the option of a range of A Level and BTEC subjects which allows them to mix and match between the two types of qualifications to create a bespoke programme of study specifically aimed at their interests, skills and talent.

- When picking their courses, students should take into consideration that **6 hours of teaching** and **3 hours of private study** will be spent on each A Level subject and the equivalent time for BTEC subjects per week.
- It is important to consider **future careers** along with likes and dislikes at GCSE, and take advice from school, parents and other sources of information before selecting.
- For some years, the old routes of sciences and maths to the exclusivity of the arts and vice versa have not applied. Students may choose from a broad range of subjects and mix traditional with modern subjects to produce a combination which suits them best and well equips them for the future.
- If studying A Levels, pupils will pick three A Level subjects and in exceptional circumstances, pupils may take four.

We are here to help with your decision - and if you feel that you would like further support to make the right choice, please contact **Ms Davenport** (rdavenport@arnoldlodge.com) who will happily help you.





ARNOLD LODGE

4 - 18 yrs Co-educational Independent Day School

SCHOLARSHIPS

The Douglas Hall Sixth Form Scholarship

In honour of Mr Douglas Hall who was Headmaster of Arnold Lodge during the early 20th Century, Arnold Lodge has introduced the Douglas Hall Sixth Form Scholarship. The scholarship may be honorary or carry a fee reduction for exceptional excellence. The Douglas Hall Scholarship will be available for academic excellence, particularly in the subjects pupils are wishing to study.

Scholarship assessment takes place in the academic year before a pupil looks to join Arnold Lodge and parents are usually notified of a decision within two or three weeks of assessment. Pupils must be recommended by their current Headteacher. Before being assessed, parents must register their child after which a reference from the pupil's current school will be requested.

A very limited number of assisted places may be available for entry to Arnold Lodge in cases where a pupil does not meet the requirements for a scholarship. Arnold Lodge will also consider bursary applications from parents of children who have been awarded a scholarship but may not be able to consider Arnold Lodge for financial reasons. Parents can apply to have the scholarship augmented by a bursary, subject to a means test. All awards are subject to the school's ability to fund them within the context of its overall budget, and therefore levels cannot be guaranteed.

The Headteacher has the right to withdraw a scholarship at any time if behaviour, commitment and progress are not being maintained.

For more information on the Douglas Hall Scholarship, contact Katie Trayner (ktrayner@arnoldlodge.com).





ARNOLD LODGE

4 - 18 yrs Co-educational Independent Day School

Leavers' Destinations

Accountancy and Finance – Northampton University

Air Transport with Commercial Pilot Training - Buckinghamshire New Uni

American Studies and Politics - University of Sussex

Business Management and Marketing - Nottingham Trent University

Business Management - University of Exeter

Criminology - Oxford Brookes

Criminology - DE Montfort University

Drama with Film - Royal Holloway, London

Economics - University of Manchester

English - University of Warwick

History - Northampton University

Law with Social Sciences - University of Warwick

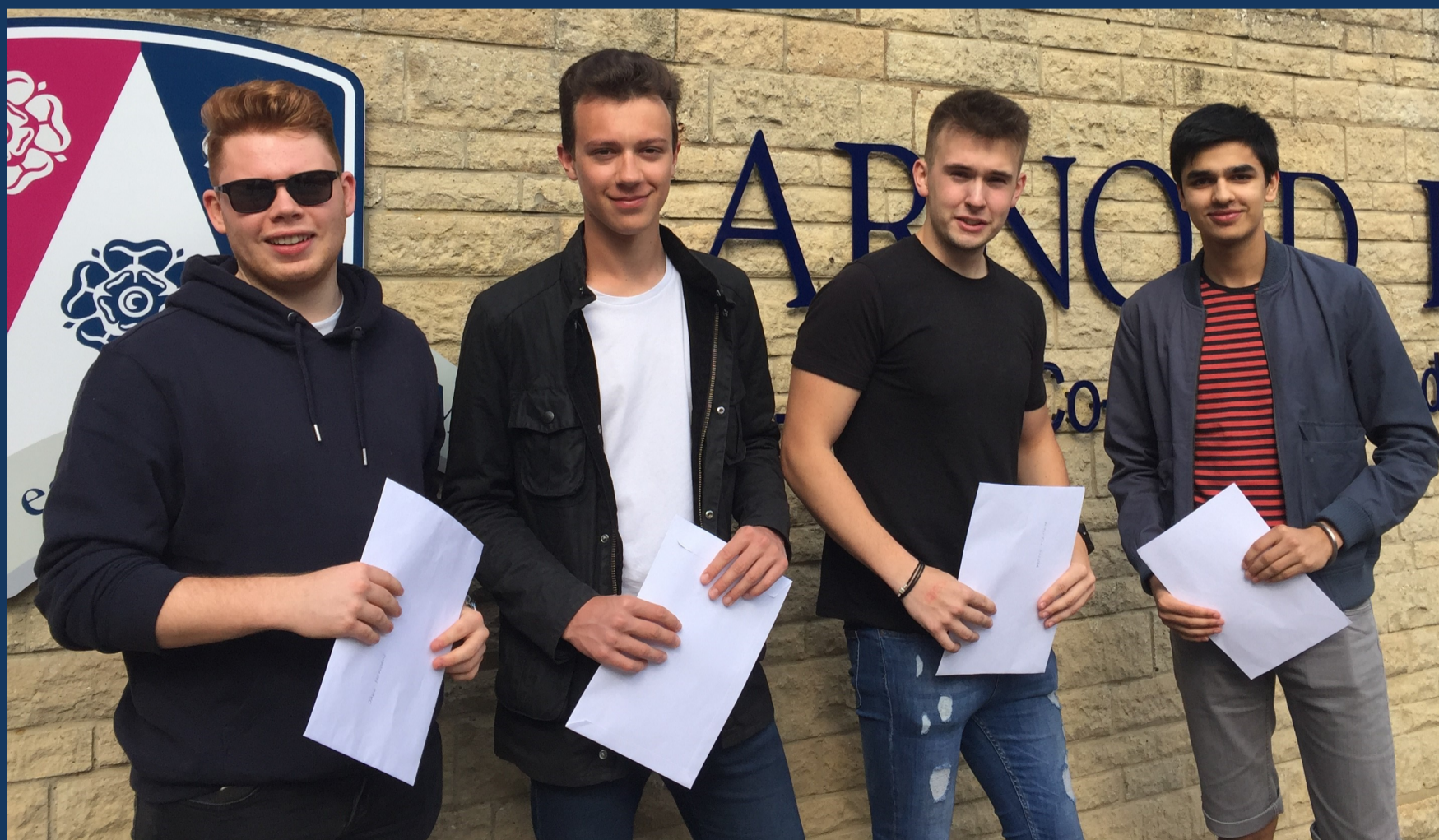
Marketing - Aston University

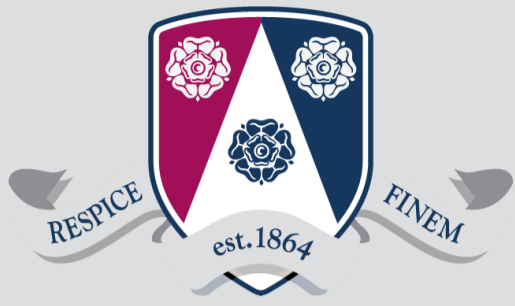
Media Production - Liverpool John Moores University

Psychology - Oxford Brookes University

Sociology - University of Warwick

Sport and Exercise Therapy - Coventry University





ARNOLD LODGE

4 - 18 yrs Co-educational Independent Day School

Art & Design

A Level

Lead teacher: Miss Cox

Duration: 2 years / 1 year

Level of course: A Level / AS Level

Exam board: AQA

Are there any entry requirements?

Candidates should have gained a minimum of Grade 6 in Art and Design at GCSE in order to study this course.

What will I study?

AS

Component 1: Coursework portfolio including work exploring a given theme/s, comprising of 2D and/or 3D Art and/or Design work in a range of media. **No time limit (96 marks maximum). 60% of AS.**

Component 2: Externally set assignment chosen from a series of questions. You will demonstrate your knowledge, creativity and skills through your exploration and presentation of work surrounding your chosen question. **Prep time plus 10 hours supervised time (96 marks maximum). 40% of AS.**

A2

Component 1: Personal investigation. You will choose your own starting point and explore this to reach an outcome. This will include a written study to support your work (1000-3000 words). **No time limit (96 marks maximum). 60% of A-Level.**

Component 2: Externally set assignment where you choose from a series of questions. You will demonstrate your knowledge, creativity and skills through your exploration and presentation. **Prep time plus 15 hours supervised time (96 marks maximum). 40% of A-Level.**



What can I do after this course?

After studying for your Art and Design AS/A2 many go on to higher education or to the world of work. Art and Design can be successfully combined with other Arts based subjects or as a contrast to Science or Maths based subjects. Art and Design is a subject relevant to everyday life and is useful for many careers. Students may choose to pursue either Art or Design based courses or creative careers following on from this course.

Further details

Students wishing to study Art and Design should be aware that the course requires a substantial amount of visual coursework as well as supporting written work. Students should also be prepared to research and analyse a large number artists and designers work which will necessitate a high degree of independent learning outside of lessons, including gallery and museum visits. The specification for A level Art and Design directly relates to and follows on from GCSE Art and Design, however students have greater flexibility, creative input and time in order to stretch their abilities. Across the course, students must cover a minimum of two disciplines within their work from fine art, textiles, photography, graphic design and 3D.

Email contact

Miss A. Cox

Email: acox@arnoldlodge.com



ARNOLD LODGE

4 - 18 yrs Co-educational Independent Day School

A Level

Biology

Lead teacher: Mrs Jaffri

Duration: 2 years

Level of course: A Level

Exam board: AQA

Are there any entry requirements?

Ideally, students need to have achieved 5 grade 5s including English, Maths and Science/Biology. Candidates should have a grade 6 in a Science.

What will I study?

Module 1: Development of practical skills in biology

Module 2: Foundations in biology covering cell structure, biological molecules, enzymes, biological membranes and cellular organisation

Module 3: Exchange and transport covering plants and animals

Module 4: Biodiversity, evolution and disease covering the immune system, disease prevention and classification

Module 5: Communication, homeostasis and energy covering hormones, the nervous system, plant and animal responses, photosynthesis and respiration

Module 6: Genetics, evolution and ecosystems covering cellular control, inheritance, biotechnology, and populations and sustainability

Assessment: How will I be assessed?

- Paper 1: 35% of A level 2hr written paper (91 marks)
- Paper 2: 35% of A level 2hr written paper (91 marks)
- Paper 3: 30% of A level 2hr written paper including an essay (78marks)

Practical endorsement in biology— a minimum of 12 practical activities.

What can I do after this course?

After studying for Biology A-level many students go on to higher education or to the world of work. Biology is a subject relevant to everyday life and is useful for many careers. The skills acquired studying biology equip students for careers in the clinical and health professions as well as other biological related areas. Biology also can be successfully combined with other subjects as it requires excellent analytical skills, as well as the ability to communicate effectively.

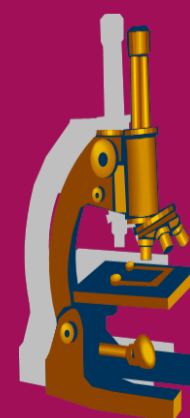
Further details

- Students wishing to study Biology should be aware that the course contains a significant quantity of maths so candidates should therefore be comfortable handling data.
- Students should also be prepared for a high degree of independent learning outside of lessons.
- For further details, please see below for the specification used: <https://filestore.aqa.org.uk/resources/biology/specifications/AQA-7401-7402-SP-2015.PDF>

Email contact

Mrs S Jaffri

Email: sjaffri@arnoldlodge.com





ARNOLD LODGE

4 - 18 yrs Co-educational Independent Day School

Business

A Level

Lead teacher: Miss Butler

Duration: 2 years

Level of course: A Level

Exam board: AQA

Are there any entry requirements?

Ideally, students need to have achieved 5 GCSEs, grades 9 –5 with a 6 in Mathematics.

What will I study?

Unit 1 - Developing a business

In this introductory unit, learners study the purposes of different businesses, their structure, the effect of the external environment, and how they need to be dynamic and innovative to survive.

Unit 2 - Developing a marketing campaign

Marketing is a dynamic field central to the success of any business. You will gain an understanding of how a marketing campaign is developed. You will explore different stages of the process that a business goes through when developing its campaign and develop your own campaign for a given product/service.

Unit 3 - Personal and business finance

This unit includes aspects of both personal and business finance. Personal finance involves the understanding of why money is important and how managing your money can help prevent future financial difficulties.

The business finance aspects of the unit introduce you to accounting terminology, the purpose and importance of business accounts and the different sources of finance available to businesses.

Unit 22 - Market research

In this unit, you will examine the purpose and type of market research undertaken in a business, consider the objectives of the research and the processes followed. You will plan and undertake a research activity using the most appropriate design and sampling method. You will analyse and interpret market research data and present your findings. You will use this knowledge to make recommendations for improvements to the market research process for a selected business.

Assessment: How will I be assessed?

Unit 1 - Internally assessed through three pieces of coursework

Unit 2 - Externally assessed through controlled assessment worth 70 marks

Unit 3 - Externally assessed through a two hour exam worth 80 marks sat in May/June of Year 12

Unit 22 - Internally assessed through three pieces of coursework

What can I do after this course?

After this course students will have developed transferrable skills such as financial management, communication, being able to undertake research, evaluation, analysis and independence. Students will also work on skills such as numeracy and literacy in order to make a smooth transition to the next level of study.

Further details

By undertaking BTEC Business you will gain a wealth of understanding in how businesses operate and the various aspects of a business that could lead you to becoming interested in different industries and jobs. BTEC Business opens up a multitude of further study opportunities at university.

Email contact

Miss Butler

Email: ibutler@arnoldlodge.com





ARNOLD LODGE

4 - 18 yrs Co-educational Independent Day School

A Level

Chemistry

Lead teacher: Dr Baker

Duration: 2 years

Level of course: A Level

Exam board: AQA

Are there any entry requirements?

Ideally, students need to have achieved 5 grade 5s including English, Maths and Science/Biology. Candidates should have a grade 6 in a Science.

What will I study?

The course is made up of three units: Organic, Inorganic and Physical Chemistry. For each of the Organic and Inorganic units, the Physical chemistry aspects are intertwined with the subject content, to allow a greater understanding of the relevance of these techniques. This course is designed to be taught as a two year course with the AS content being taught in the first year. This allows a greater flexibility for students who are unsure whether to sit an AS or the full A Level course.

Assessment: How will I be assessed?

A LEVEL:

Paper 1: Inorganic Chemistry and relevant Physical Chemistry topics, plus practical skills—2 hours, 105 marks, 35% of A level.

Paper 2: Organic Chemistry and relevant Physical Chemistry topics, plus practical skills—2 hours, 105 marks, 35% of A level

Paper 3: All content—2 hours, 90 marks, 30% of A level

AS LEVEL:

Paper 1: Inorganic Chemistry and relevant Physical Chemistry topics, plus practical skills—1.5 hours, 80 marks, 50% of AS level.

Paper 2: Organic Chemistry and relevant Physical Chemistry topics, plus practical skills—1.5 hours, 80 marks, 50% of AS level

What can I do after this course?

Chemistry is a perfect choice of subject for people who would like a career in health and clinical professions such as nursing, medicine, biochemistry or forensic science, as well as opening up many industrial routes for example in the petrochemical or pharmaceutical industries. It is also recognized as one of the 'hardest' A Levels so success in chemistry is valued by employers.

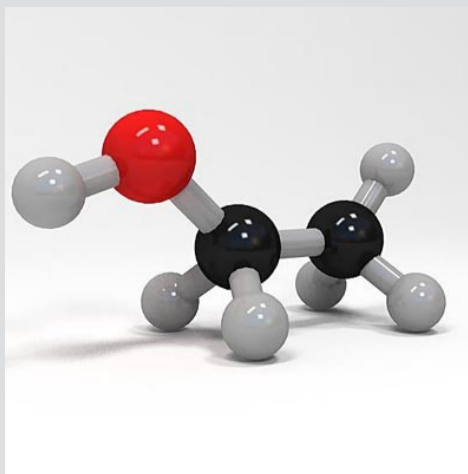
Further details

Chemistry is conceptually difficult but also includes a requirement for a significant amount of learning of facts. No A Level is an easy route, but chemistry is one of the hardest. It's therefore one of the most rewarding. Teaching of this is of course split between theoretical and practical work, with practical assessments playing a key part.

Email contact

Dr Baker

Email: abaker@arnoldlodge.com





ARNOLD LODGE

4 - 18 yrs Co-educational Independent Day School

BTEC

Creative Media Digital Games Production

Lead teacher: Mrs Badham

Duration: 2 years

Level of course: BTEC

Exam board: Pearson BTEC

Are there any entry requirements?

Ideally students need to have achieved 5 grades 5-9 including a minimum of a good grade 6 in English and Maths.

What will I study?

Unit 1: Digital Media Skills: students look at the creative digital media technical skills required to produce a product to a prescribed brief, this includes analysing the brief and relating it to the Games media sector as well as pre-production, production and post-production skills.

Unit 2: Digital Games Production: Students will look at game genres and the principles of game design. Students will design and make a digital games.

3 further units chosen from: App production, Concept Art for Computer Games, Game Engine Scripting, Games Testing, Animation, Modelling and Environments

Assessment: How will I be assessed?

Unit 1: Digital Media Skills: 20 hours in supervised conditions to complete task set by exam board. (33%) Externally assessed

Additional 4 units (16.75% each) Internally assessed

What can I do after this course?

Depending on the optional units chosen, this qualification will prepare students for employment in the games industry, in entry level roles. UCAS points are recognised by higher education providers, else learners way which to progress onto higher or degree apprenticeships.

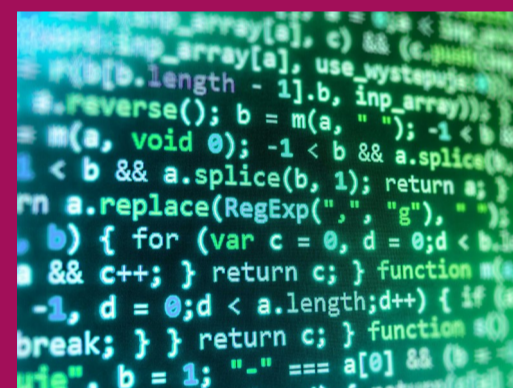
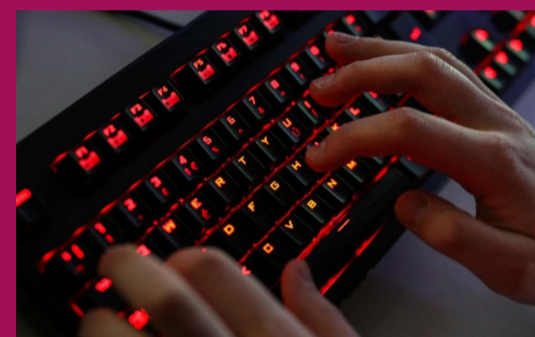
Further details

Students wishing to take this course should note it is not about playing games. The course involves researching and analysing media - of which games are a part. The course requires a lot of report writing. Furthermore, this course requires access to a variety of specialist software. Any student choosing this course must be prepared to complete homework and coursework after school in the computer room.

Email contact

Mrs C. Badham

Email: cbadham@arnoldlodge.com





ARNOLD LODGE

4 - 18 yrs Co-educational Independent Day School

A Level

Computer Science

Lead teacher: Mrs Badham

Duration: 2 years

Level of course: A Level

Exam board: OCR

Are there any entry requirements?

Ideally students need to have achieved 5 grades 5-9 a minimum of a good grade 7 in Maths and Computer science.

What will I study?

Paper 1: Computer Systems, includes the characteristics of contemporary processors, input, output and storage devices; Software and software development; Exchanging data; Data types, data structures and algorithms; Legal, moral, cultural and ethical issues

Paper 2: Algorithms and Programming, includes: Elements of computational thinking; Problem solving and programming; Algorithms to solve problems and standard algorithms

For the Programming Project, students choose a computing problem to work through, this includes analysis of the problem, design of the solution, developing the solution and evaluation

Assessment: How will I be assessed?

Paper 1: Computer Systems (40%) - 2 hour 30 min examination

Paper 2: Algorithms and Programming (40%) - 2 hour 30 min examination

Programming Project (20%)

What can I do after this course?

A good grade in Computer Science at A level is valued by universities and employers since it requires the development of analytical thinking and problem solving skills. This course also lays an appropriate foundation for further study of Computer Science, Engineering, Physics or related subjects in higher education.

Many problems in the sciences, engineering, health care, business and other areas can be solved effectively with computers, but finding a solution requires both computer science expertise and knowledge of the particular application domain. Thus, computer scientists often become proficient in other subjects.

Further details

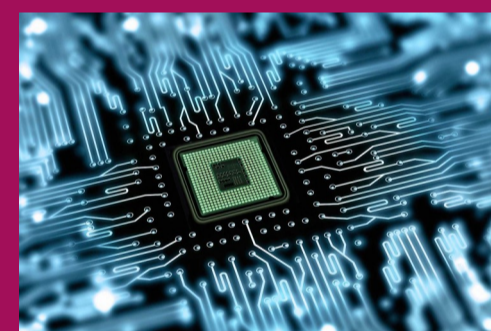
Computer Science is conceptually difficult and requires a lot of problem solving skills, computational and analytical thinking as well as the high level mathematics - a calculator is not permitted. Teaching of this is of course split between theoretical and practical work, with practical assessment playing a key part to learning the theoretical work.

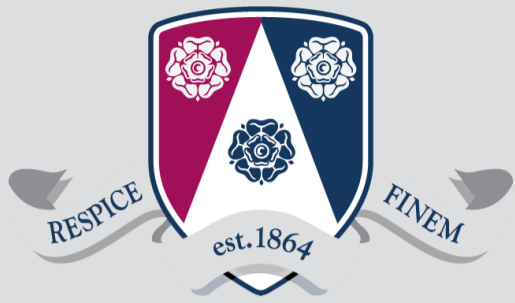
Students who wish to study for a Computer Science degree should combine it with A Level Mathematics as this is a pre-requisite at many universities.

Email contact

Mrs C. Badham

Email: cbadham@arnoldlodge.com





ARNOLD LODGE

4 - 18 yrs Co-educational Independent Day School

English Literature

A Level

Lead teacher: Ms Ward

Duration: 2 years

Level of course: A Level

Exam board: AQA

Are there any entry requirements?

Ideally students need to have achieved 5 GCSEs, grade 9 – 5 including a 6 in English Language or Literature. (We will consider students who have achieved a 5 if they show a determination to take English Literature).

What will I study?

Unit 1: Love through the ages

Study three texts: one poetry and one prose text, of which one must be written pre-1900, and one Shakespeare play.

Unit 2: Literature from 1945 to the present day

Study of three texts: one prose, one poetry and one drama, of which one must be written post-2000

Unit 3: Critical Study (essay)

One extended essay—2,500 words. Comparing two texts.

Assessment: How will I be assessed?

Unit 1: Written Examination (3 hours)

Unit 2: Written Examination (2.5 hours)

Unit 3: Critical Essay (2,500 words)

What can I do after this course?

After studying for your English Literature A-level you can progress to a Literature degree in Higher Education. English Literature A level is the key through all gateways; whether this is business, research, education or finance as it requires a close attention to detail, detailed analysis, imaginative and creative responses, problem solving as well as requiring students to demonstrate excellent written communication skills and higher order thinking skills. English Literature is well respected and can aid you in any path you wish to take.

Further details

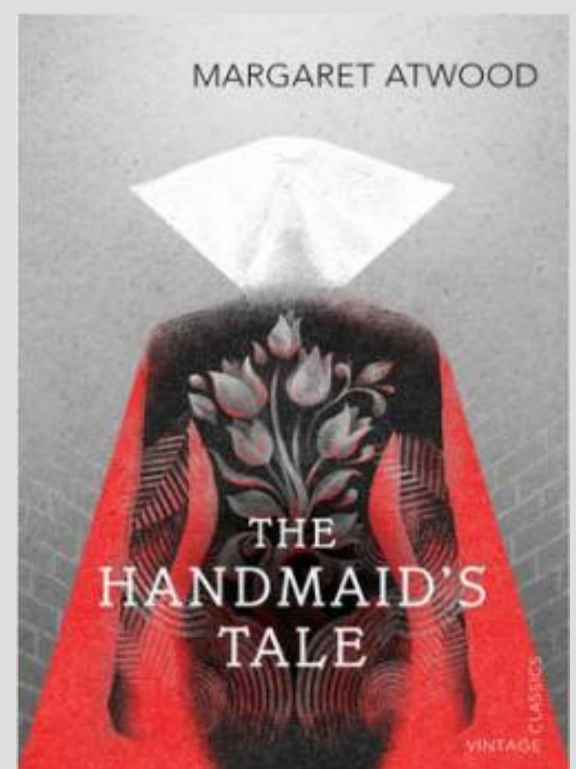
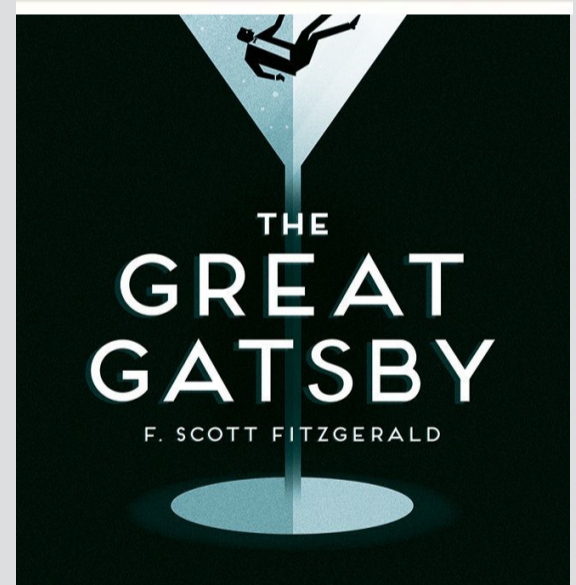
Students wishing to study English Literature should be aware that they will be required to undertake independent research and extended reading away from the course. This course intends to foster a love of literature through a seminar-style approach; the learning will be shared, not dictated.

Students should be comfortable taking written exams and writing extended pieces of independent coursework.

Email contact

Ms V.Ward

Email: vward@arnoldlodge.com





ARNOLD LODGE

4 - 18 yrs Co-educational Independent Day School

BTEC

Food Technology

Lead teacher: Mrs O'Sullivan

Duration: 2 years / 1 year

Level of course: Level 3

Exam board: WJEC

Are there any entry requirements?

Ideally students need to have achieved a minimum of five GCSEs with grades 9 to 5, including English and Maths. There is no requirement to have studied Food or DT at GCSE, but an interest in food and a love of being in the kitchen is vital.

What will I study?

Students will study nutrition, the food industry and food science during this course. Students will also design and make food products, as well as solve problems related to food design.

Units covered include during this course:

- Nutrition and planning meals
- Making food safe to eat
- Food science
- Exploring current issues related to food choices

Assessment: How will I be assessed?

50% of this course is assessed internally
50% of this course is assessed externally

What can I do after this course?

This Diploma prepares students for Further Education in Food but can also lead into nutritional science and associated areas. The food and hospitality industry is a major employer either post A Level, with training, or post degree level. This course will help students develop a life long enjoyment and understanding of food and nutrition.

Further details

In a nutshell, Food Technology enables students to use food science for the creation, preservation, processing, packaging and distribution of food products. As a food technologist you will be able to create foods that satisfy the increasing demand for meals which look fantastic, taste great and are marketable. A diploma Food Technology will lead to a wide career choice. People are always going to eat, so there will always be a food industry, and it is a growth area.

Email contact

Mrs M. O'Sullivan

Email: mosullivan@arnoldlodge.com



MasterChef





ARNOLD LODGE

4 - 18 yrs Co-educational Independent Day School

French

A Level

Lead teacher: Miss Morgan

Duration: 2 years

Level of course: A Level

Exam board: AQA

Are there any entry requirements?

Ideally students need to have achieved a minimum of five GCSEs with grades 9 to 5, including English. Candidates should also have a grade 7 in French.

What will I study?

This qualification is linear, meaning all the exams are taken at the end of the course. The core content of the course focuses on social issues and trends, political and artistic culture and, of course, grammar. In addition, you will study 2 set texts or one set text and a film.

Assessment: How will I be assessed?

Written exam: 2 hours 30 minutes (50% of A-level)

- Listening and responding to a variety of spoken passages (30 marks)
- Reading and responding to a variety of texts (50 marks)
- Translation into English; a passage of minimum 100 words (10 marks)
- Translation into French; a passage of minimum 100 words (10 marks).

Written exam: 2 hours (20% of A-level)

2 questions to be answered in French on two set texts or one set text and a film. Students are advised to write approximately 300 words per essay.

Oral exam: 21–23 minutes (30% of A-level)

- Discussion of a sub-theme (5-6 minutes) with the discussion based on a stimulus card which is studied during 5 minutes preparation time (25 marks).
- Presentation (2 minutes) and discussion (9–10 minutes) of individual research project (35 marks).

What can I do after this course?

After studying French A level, many students go on to higher education before entering the world of work in this country or abroad. French requires excellent listening skills, the ability to communicate effectively and logical thinking to get to grips with all the grammar. All these skills are advantageous in a wide variety of careers.

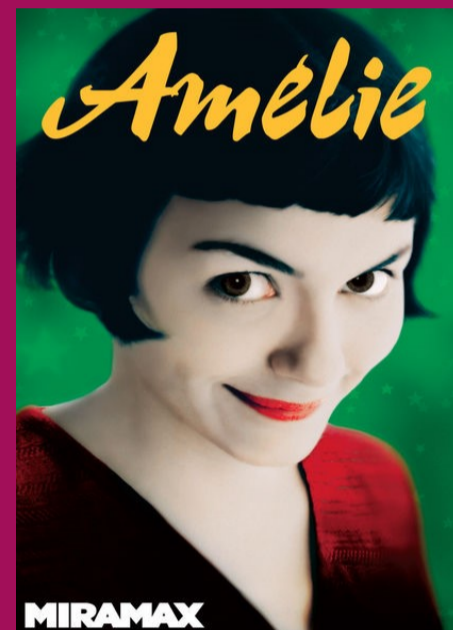
Further details

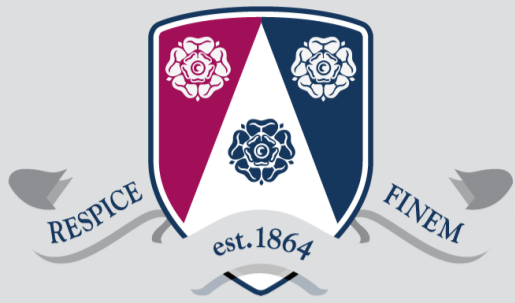
Students wishing to study French should be aware that all the units contain a significant quantity of new grammar and vocabulary. Listening and reading passages are authentic (news reports, for example). Students will be expected to read French newspapers and magazines, to listen to the news and to watch films in French on a regular basis. Students need to be comfortable with sitting terminal papers and committed to the substantial revision that will be required when preparing for the examinations.

Email contact

Miss B Morgan

Email: bmorgan@arnoldlodge.com





ARNOLD LODGE

4 - 18 yrs Co-educational Independent Day School

A Level

Geography

Lead teacher: Miss R Davenport **Duration:** 2 years

Level of course: A Level **Exam board:** AQA

Are there any entry requirements?

5 9-4 grade GCSEs including 6 or above in Geography, 5 or above in English (you will need to write essays under timed conditions showing effective use of sentences, paragraphs, grammar etc), and 5 or above in Maths (you will need to interpret graphs and other forms of statistical information). You also need to be prepared to read around topical issues in newspapers/magazine/internet articles, and watch TV/radio documentaries as well. A commitment to the substantial revision required prior to examinations is essential, and apart from that all you need is a genuine interest in Geography and the world around you.

What will I study?

Physical Geography: Water and carbon cycles ; Glacial systems and landscapes ; Hazards

Human Geography: Global systems and global governance; Changing places; Contemporary urban environments

Geography fieldwork investigation: An individual investigation including data collected in the field. This can be related to any aspect of specification content and must be developed by the individual.

Assessment: How will I be assessed?

Physical Geography (40% of A-Level) - 2 hour 30 minutes exam paper, 3 sections, 120 marks total. Sections A and B are 36 marks each, section C is 48 marks.

Human Geography (40% of A-Level) - 2 hour 30 minutes exam paper, 3 sections, 120 marks total. Sections A and B are 36 marks each, section C is 48 marks.

Both exams contain a mixture of short answer, levels of response and extended prose questions.

Fieldwork investigation (20% of A-Level)

This is a 3000-4000 word investigation worth 60 marks. It will be marked by the teachers and moderated by AQA.

What can I do after this course?

Geography combines very well with both science and arts subjects at A level. It is an academic subject highly regarded by top universities as 'a facilitating subject most likely to be required for entry to degree courses'. Geography develops skills valuable in many careers.

Further details

Geography is unique in bridging the natural sciences, social sciences and economics. It is for those who find the physical nature of our planet awesome, care about the impact humans have on it, and hold views about how we should respond to the many challenges we face.

Email contact

Miss R. Davenport

Email: rdavenport@arnoldlodge.com





ARNOLD LODGE

4 - 18 yrs Co-educational Independent Day School

History

A Level

Lead teachers: Ms A Gulliver

Duration: 2 years

Level of course: A Level

Exam board: AQA

Are there any entry requirements?

Ideally students need to have achieved 5 GCSEs, grades 9 –5 including a 6 in History and/or English Language. (GCSE History is **not** a requirement of A-Level History).

What will I study?

Unit 1: The Tudors, 1485– 1609

Unit 2: The Cold War, 1945–1991

Unit 3: Coursework: Social revolution in Britain during the Twentieth Century

Assessment: How will I be assessed?

Unit 1: Written Examination—2 hours 30 minutes (40%)

Unit 2: Written Examination— 2 hours 30 minutes (40%)

Unit 3: Coursework Essay—3,500 words (20%)

What can I do after this course?

After studying for your History, you will be perfectly equipped for further study in Higher Education. You will be prepared to take on research tasks, to collate, analyse and evaluate data, to work independently and to assert your own informed opinion. History is excellent for anyone wishing to work as journalists, teachers, researchers, working in the media, financial sales, marketing or even as a Historian.

Further details

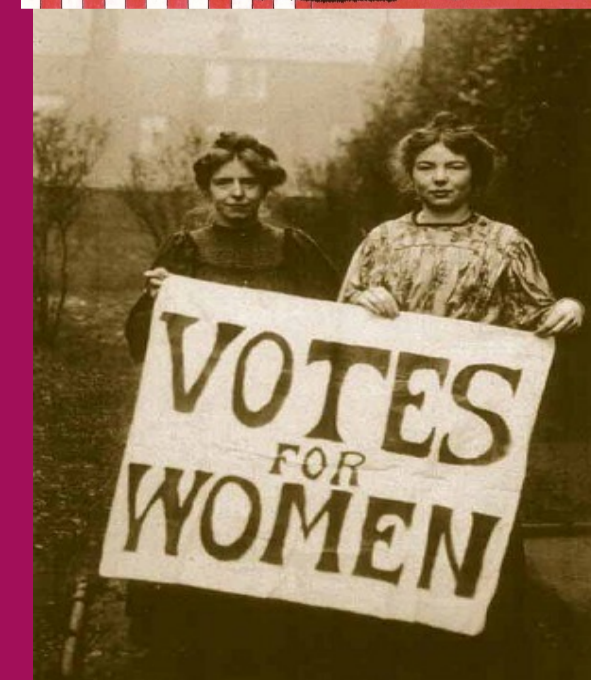
Students wishing to study History should be aware that the course will require a high level of independent research and analysis. You will be required to read historical works and to judge their significance and bias in your own opinion.

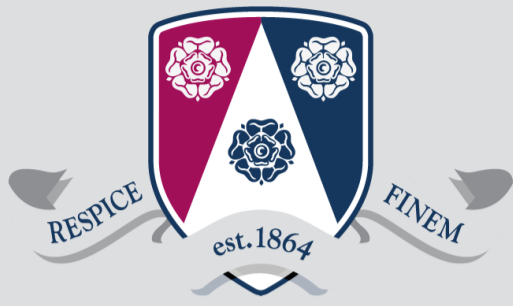
History will be taught in open seminars so expect to come to lessons prepared to debate and discuss. Students should be comfortable taking written exams and producing independent, extended written pieces of coursework.

Email contact

Ms A. Gulliver

Email: agulliver@arnoldlodge.com





ARNOLD LODGE

4 - 18 yrs Co-educational Independent Day School

A Level

Mathematics

Lead teacher: Ms Gore

Duration: 2 years / 1 year

Level of course: A Level / AS Level

Exam board: AQA

Are there any entry requirements?

Ideally students need to have achieved 5 grades 5-9 including English and Maths and candidates should have a minimum of a good grade 7 in Maths.

What will I study?

Paper 1 covers core mathematical concepts including: Proof, Algebra and functions, Coordinate geometry, Sequences and series, Trigonometry, Exponentials and logarithms, Differentiation, Integration, Numerical methods

Paper 2 covers any content from Paper 1 and content from: Vector, Quantities and units in mechanics, Kinematics, Forces and Newtown's laws, Moments.

Paper 3 covers any content from Paper 1 and content from Statistical sampling, Data presentation and Interpretation, Probability, Statistical distributions, Statistical hypothesis testing

Assessment: How will I be assessed?

Paper 1: Core Content (33 $\frac{1}{3}$ %) - 2 hour examination

Paper 2: Pure Mathematics with Mechanics (33 $\frac{1}{3}$ %) - 2 hour examination

Paper 3: Pure Mathematics with Statistics (33 $\frac{1}{3}$ %) - 2 hour examination

What can I do after this course?

Advanced GCE Mathematics is a much sought after qualification for entry to a wide variety of full-time courses in higher education. There are also many areas of employment which place a high value on the skills required for A level mathematics, such as logical thinking, problem solving and statistical analysis. Careers which either require A level maths or are strongly related include: economics, medicine, architecture, engineering, accountancy, psychology, teaching, information and communications technology and physics.

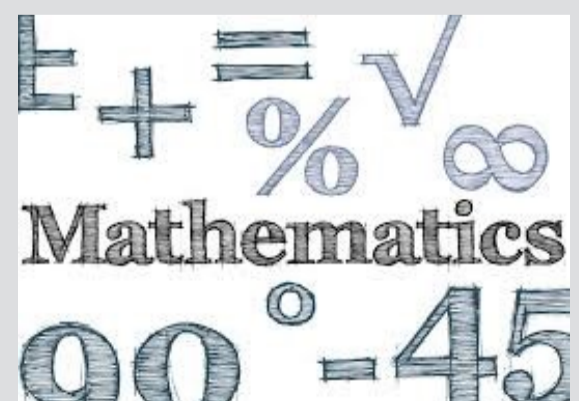
Further details

An essential part of mathematical study is the challenge of analysing and solving a problem. You will be expected to select and apply the mathematics you have learnt in order to solve problems set in a real-life context. You will not have to write essays but you are required to communicate and justify your solutions clearly and logically. Mathematics is about 'doing' rather than learning facts, so you will also need to be committed to the substantial amount of practice required to achieve in this subject.

Email contact

Ms K. Gore

Email: kgore@arnoldlodge.com





ARNOLD LODGE

4 - 18 yrs Co-educational Independent Day School

BTEC

Music Technology

Lead teacher: Mr Bosworth

Duration: 2 years / 1 year

Level of course: BTEC

Exam board: EdExcel

Are there any entry requirements?

Entry onto BTEC will be taken on a case by case basis. Pupils studying for BTEC qualifications will need to have minimum grade 4 in GCSE Maths & English or Level 2 functional skills qualification (or be willing to work towards these during the course).

What will I study?

This course gives students the equivalent of one 'A' level and is particularly suitable for those interested in studio production, composing for TV and the media or working in the music industry.

You will learn “music production techniques”, “composing to moving images”, “live sound techniques”, “audio engineering techniques”, “delivering a finished product from a brief within a deadline”. You will be taught by music teachers who are also industry professionals.

Assessment: How will I be assessed?

The course is not exam based. You undertake a mixture of practical and theoretical/analytical project-based work which is split into different units. Students are assessed on the portfolios they create of this work during each unit.

The course consists of practical sessions, lectures, workshops and live performances, covering a range of skills and knowledge, consisting of core and specialist elements. An overall grade is awarded for each unit.

What Units are available?

- Audio Engineering
- Music Technology in Performance
- Music Sound in Moving Image
- Music Production
- Sequencing Systems
- Sound Creation and Manipulation
- Functional Keyboard Skills
- Sound and Music Industry
- Composition Skills
- Listening Skills
- Music Events Management
- Marketing and Promotion
- Music Project
- Music in Society
- Live Sound Techniques
- Concert Production
- Planning and Delivering a Music Product
- Listening skills for Music Technologists

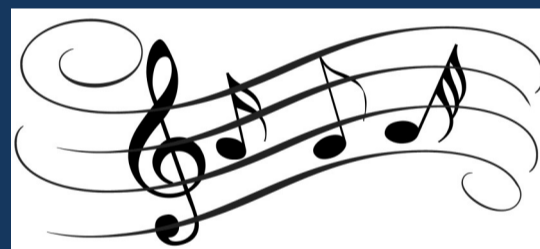
What can I do after this course?

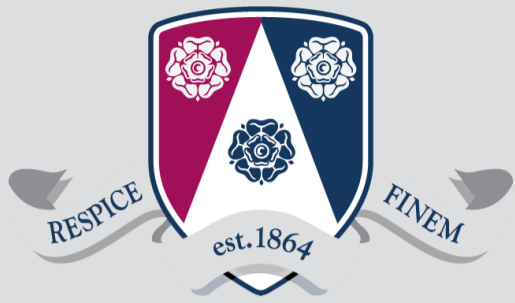
This qualification enables you the opportunity to prepare yourself for a place in the music industry or for entry to a degree or HND course. Our teachers have taught students who have gone on to work in areas such as record labels (e.g. EMI), work in TV and Film sound recording, composing for TV and film, DJ's, and include artists who have been in the top 10 music charts.

Email contact

Mr M. Bosworth

Email: mbosworth@arnoldlodge.com





ARNOLD LODGE

4 - 18 yrs Co-educational Independent Day School

BTEC

Performing Arts

Lead teacher: Mr Dobson

Duration: 1 / 2 years

Level of course: BTEC

Exam board: Pearson

Are there any entry requirements?

Ideally students need to have achieved 5 grades 4-9 including English and Maths. Candidates should ideally have a minimum of a grade 4 in Drama GCSE or a Merit in equivalent qualification in Drama or Performing Arts.

What will I study?

Performing Arts BTEC gives students an introduction to the Performing Arts sector and is an ideal course for students with an interest in Drama or the Performing Arts industry. The course is equivalent to half an A Level but students who have complete this qualification in one year may progress to a full A Level equivalent BTEC.

The course consists of two units which both focus on:

- practical skills and techniques in a range of performing arts disciplines
- critical analysis skills and contextual understanding of practitioners work

Over the course, students will gain an understanding of the working practices of professionals in the Performing Arts industry and of specific techniques linked to their chosen discipline. Their knowledge and understanding of this will be shown through their written work during Unit 1. Students will also apply this knowledge to their practical work and their working practices during Unit 2.

Assessment: How will I be assessed?

Assessment is through a mixture of internally and externally assessed units. Most units are internally assessed based on tasks set. Externally assessed units will be taken under specific conditions and then marked by the exam board.

Unit 1: Investigating Practitioners' Work

Unit 2: Developing Skills and Techniques for Live Performance

What can I do after this course?

Due to the transferable knowledge and skills—such as confidence in presentation—developed through this course it is highly regarded by employers in all sectors, so is an excellent qualification even for those not interested in pursuing Performing Arts following this qualification.

Further details

In order to be successful in this subject, students will need to show an ability to work independently and be committed to the substantial amount of practice required to achieve in this subject.

Email contact

Mr P Dobson

Email: pdobson@arnoldlodge.com





ARNOLD LODGE

4 - 18 yrs Co-educational Independent Day School

Physical Education

BTEC

Lead teacher: Mr T. Gear

Duration: 2 years / 1 year

Level of course: Level 3

Exam board: Pearson

Are there any entry requirements?

Candidates would normally be expected to have successfully completed a GCSE in Physical Education but there is no prerequisite. The specification has been designed to provide progression by building on the knowledge, understanding and skills set out at GCSE

What will I study?

Mandatory Units

- Anatomy and Physiology
- Fitness Training and Programming for Health, Sport and Well-being
- Professional Development in the Sports Industry

Optional Units

- Sports Leadership
- Application of Fitness Testing
- Sports Psychology
- Practical Sports Performance



Assessment: How will I be assessed?

Externally-assessed units

- Examinations – all learners take the same assessment at the same time, normally with a written outcome. (*Anatomy and Physiology and Fitness Training and Programming for Health, Sport and Well-being*)

Internally-assessed units

- Written assignments
- Practical assessment
- Presentations

What can I do after this course?

After studying BTEC Sport you may go on to higher education or to the world of work. Physical Education is recognized as a science and is of benefit to people with an eye to a career in leisure, teaching or coaching, physiotherapy, nursing, sports management, sports journalism, sports psychology or nutrition.

Further details

The qualification is equivalent in size to one A Level. You will study 4 units of which 3 are mandatory and 2 are external.

Email contact

Mr T. Gear

Email: tgear@arnoldlodge.com





ARNOLD LODGE

4 - 18 yrs Co-educational Independent Day School

A Level

Physics

Lead teacher: Mr Hawkins

Duration: 2 years

Level of course: A Level

Exam board: AQA

Are there any entry requirements?

Ideally students need to have grade 6 in Physics or 66 in Combined Science, and minimum of a grade 6 in Maths. Candidates without a grade 6 in Maths will find aspects of the course difficult.

What will I study?

A level students will study 9 units in total. 8 are compulsory: Measurements and their errors, Particles and radiation, Waves, Mechanics and materials, Electricity, Further mechanics and thermal Physics, Fields and their consequences and Nuclear Physics. The 9th unit is optional, with a choice from Astrophysics, Medical Physics, Engineering physics, Turning points and Electronics. The first 5 topics can be assessed separately as an AS level, giving greater flexibility for students who are unsure whether to sit an AS or the full A-level course.



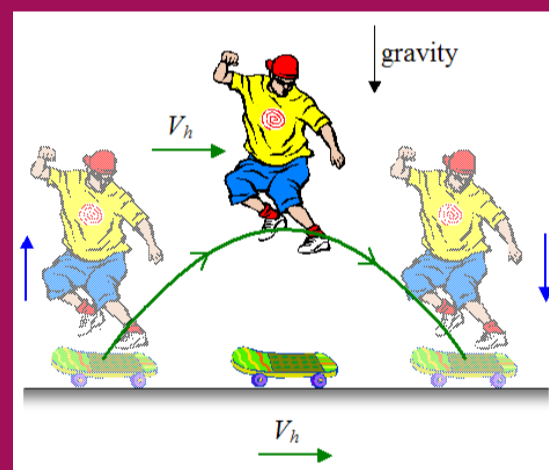
Assessment: How will I be assessed?

A level:

Paper 1: (Units 1-5 + 6.1 (Periodic motion)) 2 hours, 85 marks—34% of A level

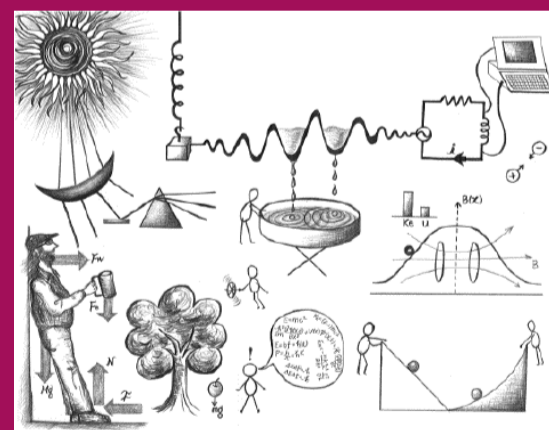
Paper 2: (Units 6.2 - 8) 2 hours, 85 marks—34% of A level.

Paper 3: (Practical skills and data analysis and optional module) 2 hours, 80 marks—32% of A level.



What can I do after this course?

Physics is a perfect choice of subject for people who would like a career in technical and practical areas such as engineering, design, electronics or computing, as well as opening up many industrial routes for example in the petrochemical or manufacturing industries. Due to the challenging and analytical nature of the subject, Physics is highly valued by prospective employers.



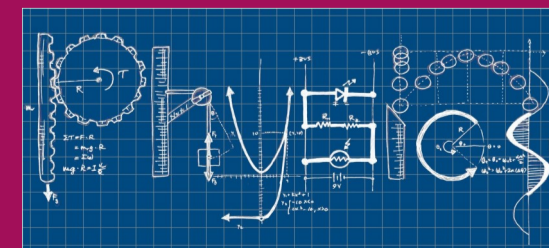
Further details

Physics is conceptually difficult but also includes a requirement for a significant amount of learning of facts. It also features a significant amount of high level mathematics. You should be comfortable manipulating equations without triangles. Teaching of this is of course split between theoretical and practical work, with practical assessments playing a key part.

Email contact

Mr A. Hawkins

Email: ahawkins@arnoldlodge.com





ARNOLD LODGE

4 - 18 yrs Co-educational Independent Day School

A Level

Politics

Lead teacher: Mr Colledge

Duration: 2 years

Level of course: A Level

Exam board: AQA

Are there any entry requirements?

Ideally students need to have achieved 5 GCSEs grades 5 –9 including English and Maths and candidates should have achieved a grade 6 in a literacy based subject to support the written component of the course.

What will I study?

Paper 1: Government & Politics of the UK

This paper focuses on the make up of politics in the UK from the way the government works through to how we interact with the democratic process.

Paper 2: The government and politics of the USA

This paper focuses on the politics of the USA and requires a comparative study of the structural, rational and cultural similarities and differences between the US political system and the UK.

Paper 3: Political Ideas

This paper focuses on political ideologies covering Liberalism, Conservatism, Socialism and then one additional ideology from Nationalism, Feminism, Multiculturalism, Anarchism and Ecologism.

Assessment: How will I be assessed?

A level:

Paper 1: Government & Politics of the UK

Written exam: 2 hours—33⅓ % of A-level

Paper 2: The government and politics of the USA

Written exam: 2 hours—33⅓ % of A-level

Paper 3: Political Ideas

Written exam: 2 hours—33⅓ % of A-level

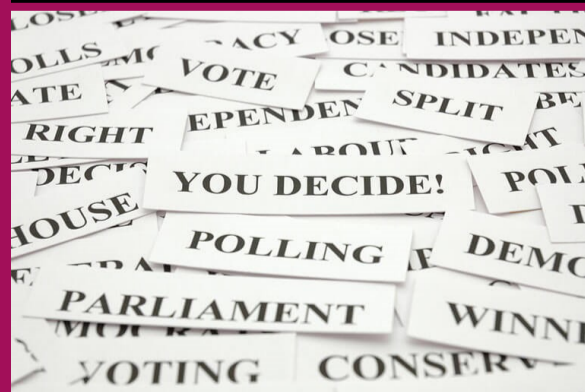
What can I do after this course?

Covering news and current affairs from the UK and US, it helps you understand how the UK country is run and develops research, written communication and debate skills. It also helps grow your confidence. It's ideal if you're considering studying politics, sociology, ethics, advertising or journalism at university and is highly regarded by employers in industries including politics, international organisations, the media, government and the civil service

Email contact

Mr L. Colledge

Email: lcolledge@arnoldlodge.com





ARNOLD LODGE

4 - 18 yrs Co-educational Independent Day School

Sociology

A Level

Lead teacher: Miss E Pulling

Duration: 2 years

Level of course: A Level

Exam board: AQA

Are there any entry requirements?

Ideally students need to have achieved 5 GCSEs, grades 9 –5 including English and Maths.

What will I study?

Sociology involves the study of the relationship between the individual and society. It follows a scientific approach in that sociologists can only make and present arguments about society and people's behaviour on the basis of factual evidence and reasoned theoretical arguments. Sociology also involves the development of critical thinking by asking questions about who we are as people, how we live our lives and how this is influenced by the way society is organised. You will study in detail specific aspects of society such as family life and relationships; the role of the mass media; the education system; social inequality; globalization; crime and deviance.



Assessment: How will I be assessed?

Assessment will involve the writing of short and long essay style answers.

External assessment will involve sitting three examinations at the end of the two year course:

Unit 1: Socialisation, culture and identity (90 minutes)

Unit 2: Researching and understanding social inequalities (135 minutes hours)

Unit 3: Debates in contemporary society: Globalisation, Digital social world and Crime & Deviance (135 minutes)



What can I do after this course?

Sociology provides you with a range of skills which are transferrable to other subjects and job roles. Sociology is useful for anyone thinking of becoming a teacher, social researcher social worker, youth worker, probation officer and working in marketing and advertising. Sociology is a highly respected A level by the leading universities in the UK.



Further details

Sociology is the study of society and how certain social institutions and cultural values influence us in our daily lives as well as all people around the world. It can be a very positive tool for young people to help them understand their place in the world as well as how society operates around them. Importantly, in an age of globalisation and digital communication technologies such as smartphones and social media platforms, who we are as people and why we live the lives we do has become an even more important question. Sociology will provide you with some answers to these questions and importantly allow you to make up your own mind about them.



Email contact

Miss E. Pulling

Email: epulling@arnoldlodge.com



ARNOLD LODGE

4 - 18 yrs Co-educational Independent Day School

Spanish

A Level

Lead teacher: Ms Morgan

Duration: 2 years

Level of course: A Level

Exam board: AQA

Are there any entry requirements?

In order to take this course, students ideally need to have achieved a minimum of five GCSEs with grades 9 to 5, including English. Candidates should also have a grade 7 in Spanish.

What will I study?

This qualification is linear, meaning all the exams are taken at the end of the course. The content of the course focuses on several aspects of Spanish life, including politics, social issues and culture. Students will also gain knowledge and understanding of grammar. In addition, students will study 2 set texts or one set text and a film.

Assessment: How will I be assessed?

Written exam: 2 hours 30 minutes (50% of A-level)

- Listening and responding to a variety of spoken passages (30 marks)
- Reading and responding to a variety of texts (50 marks)
- Translation into English; a passage of minimum 100 words (10 marks)
- Translation into Spanish; a passage of minimum 100 words (10 marks).

Written exam: 2 hours (20% of A-level)

2 questions to be answered in Spanish on two set texts or one set text and a film. Students are advised to write approximately 300 words per essay.

Oral exam: 21–23 minutes (30% of A-level)

- Discussion of a sub-theme (5-6 minutes) with the discussion based on a stimulus card which is studied during 5 minutes preparation time (25 marks).
- Presentation (2 minutes) and discussion (9–10 minutes) of individual research project (35 marks).

What can I do after this course?

After studying Spanish A level, many students go on to higher education before entering the world of work in this country or abroad. Spanish requires excellent listening skills, the ability to communicate effectively and logical thinking to get to grips with all the grammar. These skills are all highly valued both by universities and employers.

Further details

Students wishing to study Spanish should be aware that all the units contain a significant quantity of new grammar and vocabulary. As listening and reading pages are authentic, students will need to spend time independently reading Spanish texts, listening to Spanish TV/Radio or watching Spanish films in order to develop their listening skills. Students need to be comfortable with sitting terminal papers and committed to the substantial revision that will be required when preparing for the examinations.

Email contact

Ms B. Morgan

Email: bmorgan@arnoldlodge.com





ARNOLD LODGE

4 - 18 yrs Co-educational Independent Day School

Sixth Form

Flexibility, Opportunity and Independence

Apply now for places in September 2021



Arnold Lodge School

15-17 Kenilworth Road,

Leamington Spa,

CV32 5TW

01926 778050

Admissions@arnoldlodge.com

www.arnoldlodge.com

Arnold Lodge offers a breadth of BTEC and A Level subjects. If you are looking for an outstanding independent school to study A Levels, BTECs or even a combination of both, why not **get in touch?**